

LIQUID LITE™

BY
TOJO SEA BELOW, LLC

Patent # 7,520,644

NO NEW HOLES REQUIRED



Easy to
Install

•LIQUID LITE•
BY FAR IS THE SIMPLEST
UNDERWATER BOAT LIGHT IN THE
WORLD TO INSTALL AND USE.



Quick
Drain

LIQUID LITE™ USES THE
ULTRA BRIGHT LEDS.
THESE BRITE LEDS ARE
ASSEMBLED IN THE INDUSTRY'S
SMALLEST WATERPROOF
HOUSING.



**SUPER WIDE
ANGLE
ONLY AVAILABLE
FROM TOJO
SEA BELOW**

LED LIFE EXPECTANCY: 100,000 HOURS
VOLTAGE REQUIRED: 12 VDC
POWER CONSUMPTION: <1/4 AMP.
LENS: WIDE ANGLE
LITE SIZE: ONLY 1.75 DIAMETER
HOUSING: PASSIVATED STAINLESS STEEL "316L"
WARRANTY: 1 YEAR FROM DATE OF PURCHASE

**THREADED TO FIT THE MOST STANDARD
GARBOARD DRAINS. (1/2" NPT)**

ATTRACTS BAIT FISH

**GREAT FOR LOBSTER
NIGHT DIVING**

Phone: (561) 575-5559
Web: tojoseabelow.com

e-mail: tojoseabelow@yahoo.com
Web: theliquidlite.com

WHY SHOULD YOU CHOOSE LIQUID LITE™ FOR YOUR ULTIMATE UNDERWATER LIGHTING EXPERIENCE

- 1) "DIY" SIMPLE INSTALLATION AND NO DRILLING OF ADDITIONAL HOLES IN YOUR TRANSOM. YOU CAN INSTALL YOUR LIQUID LITE. SAVING YOU ADDITIONAL INSTALLATION COSTS!**
- 2) BEST WARRANTY IN THE INDUSTRY: 1 YEAR**
- 3) PRICING: LOWEST COST GARBOARD DRAIN LIGHT IN THE WORLD**
- 4) LIGHT OUTPUT: SUPER BRIGHT WHITE LEDS. 380 LUMENS**
- 5) LED LIFE EXPECTATIONS: 100,000 HOURS !!!**
- 6) BATTERY DRAW: MINIMUM LESS THAN 1/4 (.250) AMP, ABSOLUTLY THE LOWEST IN THE INDUSTRY!**
- 7) MAINTENANCE: MINIMUM MAINTENANCE, IF REQUIRED CLEAN THE OUTSIDE SURFACE OF THE LENS.**
- 8) SAFETY: LIGHT UP BOAT RAMPS AND BE SEEN.**
- 9) APPEARANCE: VERY LOW PROFILE WATERPROOF DESIGN AND AESTHETICALLY CORRECT.**
- 10) SEE AND CATCH MORE FISH: ALL LIGHTS WORK, LIQUID LITE ALSO WORKS GREAT FOR LOBSTER SCOUTING!**
- 11) HEAT OUTPUT: MINIMUM OF ALL LED LIGHTS. LIQUID LITE™ HAS A SAFETY SHUTDOWN FEATURE BUILT-IN.**
- 12) BONDING: NOT REQUIRED!**
- 13) LIQUID LITE STROBE FUNCTION: POSSIBLE FUTURE FEATURES, REQUIRES CONTROLLER!**
- 14) COLOR OPTIONS: SUPER BRITE WHITE, BLUE OR GREEN LED'S**
- 15) PORTABLE INVESTMENT - CAN BE MOVED BOAT TO BOAT EASILY!!!**



TWIN OUTBOARD INSTALLATION



SINGLE OUTBOARD INSTALLATION



GENER
INFORMA
STATE OF T
LED
TECHNO

ABOUT YOUR LIQUID LITE™

LIMITED 1 YEAR WARRANTY

THIS IS THE ORIGINAL AND ONLY GARBOARD DRAIN LED LIGHT ASSEMBLY IN THE WORLD. THE DESIGN AND WORKMANSHIP IS SUPERIOR TO ALL OTHER LED UNDERWATER LIGHTS IN THE MARINE INDUSTRY. THIS PRODUCT IS BEING PATENTED FOR ITS UNIQUE DESIGN, SIMPLE INSTALLATION AND EASE OF OPERATION. YOU WILL RECEIVE YEARS OF GREAT SERVICE, NOT TO MENTION THE FISH YOU WILL ATTRACT. LIQUID LITE ALSO HAS THE ABILITY TO OPERATE OUT OF THE WATER FOR SHORT PERIODS OF TIME. THIS IS A GREAT FEATURE FOR WHEN YOU ARE AT A DARK BOAT RAMP - JUST TURN ON LIQUID LITE AND YOU HAVE A **LIGHT FOR YOUR SAFETY. ALSO, LIQUID LITE IS 100% **MADE IN THE U.S.A.****

THE BRIGHTNESS OF YOUR LIGHT SOLELY DEPENDS ON THE CLARITY OF THE WATER. THE CLEARER THE WATER THE BRIGHTER THE LIGHT WILL BE. THIS IS TYPICAL OF ALL UNDERWATER LIGHTS.

WE WANT TO THANK YOU FOR YOUR PURCHASE OF THE LIQUID LITE AND IF YOU HAVE ANY QUESTIONS OR COMMENTS PLEASE CONTACT US.



SHOWN IS LIQUID LITE PROPERLY INSTALLED. ALWAYS INSTALL LIQUID LITE CORRECTLY AND CHECK FOR PROPER TIGHTNESS BEFORE LAUNCHING.

SHOWN ABOVE IS LIQUID LITE™ REMOVED FOR BILGE DRAINING. ONCE BILGE HAS DRAINED, ALWAYS **REINSTALL AND TIGHTEN LIGHT PROPERLY BEFORE TRAILERING OR USING YOUR BOAT AGAIN!**

INSTALLATION AND SAFETY PRECAUTIONS

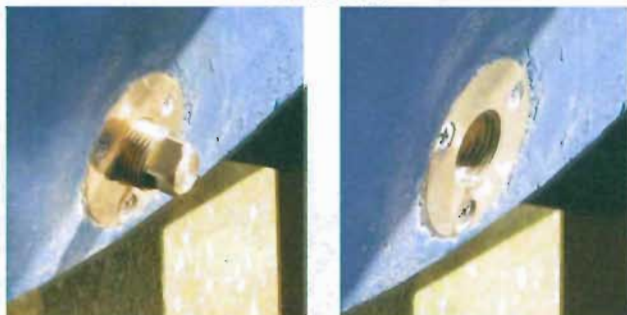
THE SIMPLE INSTALLATION MAKES INSTALLING YOUR "LIQUID LITE" FAST AND EASY. **NO NEED TO ADD ADDITIONAL HOLES IN YOUR TRANSOM.** TO INSTALL JUST RUN THE CABLE LEADS THRU THE GARBOARD DRAIN OPENING AND SCREW THE LIGHT ASSEMBLY INTO THE EXISTING GARBOARD FITTING, CONNECT THE CABLE TO A 12 VDC ON/OFF SWITCH. ATTACH THE RED LEAD TO POS (+) WITH THE INCLUDED IN LINE 3 AMP ASSEMBLY FUSE AND THE BLACK LEAD TO THE NEG (-) AND YOU NOW HAVE A SUPER BRITE/HIGH OUTPUT LED LIGHT FOR YOUR NIGHTTIME FISHING AND ENJOYMENT. TYPICAL INSTALLATION TIME FROM START TO FINISH SHOULD BE AROUND 30 TO 45 MINUTES. SOME INSTALLATIONS HAVE ONLY TAKEN 15 MINUTES!

WHEN ORDERING, IT WILL BE IMPORTANT THAT YOU KNOW THE STYLE AND SIZE OF THE EXISTING GARBOARD DRAIN FITTING INSTALLED BY THE BOAT MANUFACTURE. THIS IS ABSOLUTELY NECESSARY TO ASSURE THE LIQUID LITE ASSEMBLY WILL INSTALL EASILY AND PERFECTLY IN YOUR BOAT. CONTACT TOJO SEA BELOW IF YOU HAVE ANY QUESTIONS OR NEED HELP.

SAFETY PRECAUTIONS:

- 1) NEVER LOOK DIRECTLY INTO THE LED'S WHEN LIGHT IS TURNED ON. THEY ARE VERY BRIGHT!
- 2) NEVER REMOVE THE LIGHT ASSEMBLY WHILE THE BOAT IS IN THE WATER.
- 3) ALWAYS CHECK AND MAKE SURE THE LIGHT ASSEMBLY IS TIGHT IN THE GARBOARD FITTING BEFORE LAUNCHING YOUR BOAT!!
- 4) DISCONNECT POWER BEFORE REMOVING LIGHT ASSEMBLY FOR ANY REASON.
- 5) MAKE SURE WHEN THE LIGHT IS INSTALLED; IT DOES NOT EXTEND BELOW THE BOTTOM OF YOUR BOAT.
- 6) CALL 561-575-5559 IF YOU HAVE ANY PROBLEMS WITH THE INSTALLATION PROCEDURE OR NEED ANY TECHNICAL INFORMATION.

REMOVE & SAVE
DRAIN PLUG



STEP 1

INSTALLATION SEQUENCE



INSERT CABLE THRU
THE FITTING
& SCREW LIGHT
ASSEMBLY
IN FITTING UNTIL IT
IS TIGHT.

STEP 2



LIGHT
INSTALLED
& CHECK FOR
TIGHTNESS

STEP 3



CONNECT
WIRES TO A
12 VDC SWITCH
& INSTALL
FUSE
ASSEMBLY &
THEN TURN IT
ON. JUST THAT
SIMPLE

STEP 4